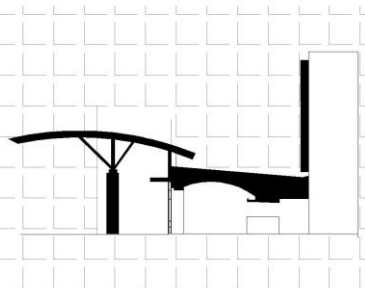




TAMIMI ARCHITECTS

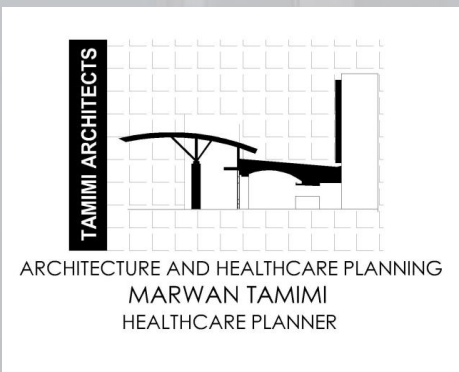


ARCHITECTURE AND HEALTHCARE PLANNING
MARWAN TAMIMI
HEALTHCARE PLANNER

CANCER PATIENTS CHARITABLE SOCIETY'S HOSPITAL

Hebron – Palestine

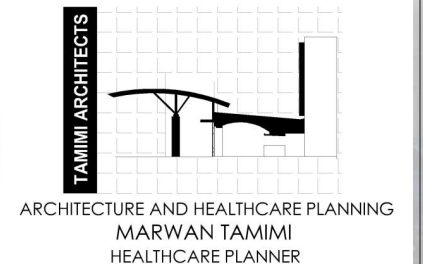
Project Data



- Cancer Patients Charitable Society's Hospital is a complete specialized hospital for cancer treatment with all needed facilities in addition to Central plant, external works, green areas, internal roads and public Masjed.
- The project approximate area is 40,000 squared meters (for all floors) on plot of 12,000 squared meters, located in AQBAT INGELA in Hebron, basin NO. (2) Plot NO. (1216) and the building footage is about 37% of total plot area. And the remaining area is for the green areas, gardens, masjed.
- The project in consist of three basement and ground floor in addition to 8th floors above the ground floor.

No.	Description	Height	Area (Squared Meters)
01	Basement Three (Parking)	3.00	3700
02	Basement Two (Parking)	3.50	3700
03	Basement One	4.42	3700
04	Ground Floor	4.42	4400
05	First Floor	4.42	4400
06	Second Floor	4.42	3000
07	Third Floor	4.42	3000
08	Fourth Floor	4.42	3000
09	Fifth Floor	4.42	3000
10	Sixth Floor	4.42	3000
11	Seventh Floor	4.42	3000
12	Eighth Floor	4.42	750
13	Final Roof	3.12	50
14	Central Plant Unit	4.42	350
	Total Area		39050

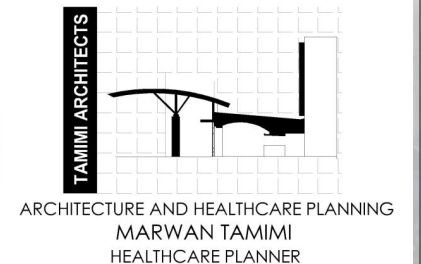
Project Floor Areas



- **Basement Three:** Capacity of 80th Cars Parking.
- **Basement Two:** Capacity of 80th Cars Parking.
- **Basement One:** Consist of Radiology Ecology, Morgue, Landry, CT Simulation Lab., Central Storage, Offices, Pharmacy, Medication Store, and Central Lab.

General Details

Basement Floors

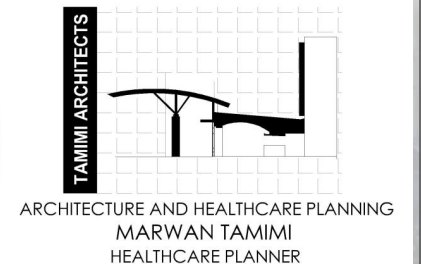


- **Ground Floor:** Including Fluoroscopy, General Radiology, CT Scan, Pet CT Scan, MRI Scan, Ultra Sound, in addition to Emergency Department, Reception, Waiting Lounge, Registration, Gifts Shop, Cafeteria and Central Kitchen.
- **First Floor:** consist of 6th operation Rooms, CSSD, Recovery and Prep. UP, changing rooms, ICU, Office and Lounges.

General Details

Ground and First Floor

Diagnostic and Therapist
Radiology Department

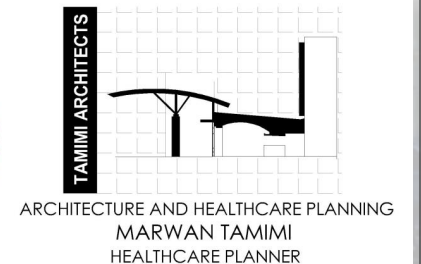


- **Second Floor:** Consist of Out-Patient Clinics and Specialized Clinics, Day care Clinics, Women Therapy Center, Mammography, Pediatric Infusion Therapy (20 Seats), Chemotherapy Ward, and all needed supportive Facilities and offices.
- **Third Floor:** Adult Infusion Therapy (20 Seats), Private Treatment Rooms, Hematology Inpatient Wards, and all needed supportive Facilities and offices.

General Details

Second and Third Floor

Out-Patient Clinics
and Cancer Therapy

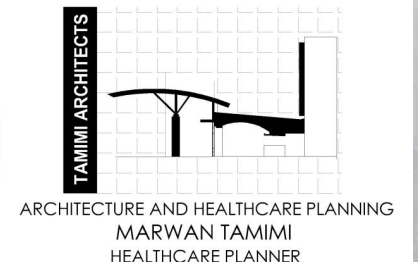


- **Forth Floor:** Consist of Inpatients Wards, Bone Marrow Transplant, Teenage and Young Adult unit (TYA).
- **Fifth Floor:** Consist of Pediatric Inpatients Wads, Consultation and Treatment Plan Rooms, Offices, Lounges, Parent Zone and Toys Hall.
- **Sixth Floor:** Consist of Adult Inpatients Wads, Consultation and Treatment Plan Rooms, Offices, Lounges.
- **Seventh Floor:** Consist of Inpatients Wads, Consultation and Treatment Plan Rooms, Offices, Lounges.

General Details

Forth to Seventh Floors

In-Patients Wards



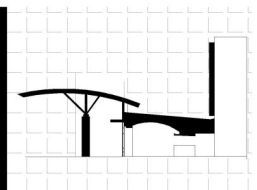
- **Eight Floor:** Consist of Staff Café, Meeting Rooms, Lecture Hall and Offices.
- **Total Bed 300 Beds.**
- **Approximate For Construction Works (60,000,000) USD.**

General Details

Eight Floor & General Notes



TAMIMI ARCHITECTS



ARCHITECTURE AND HEALTHCARE PLANNING
MARWAN TAMIMI
HEALTHCARE PLANNER

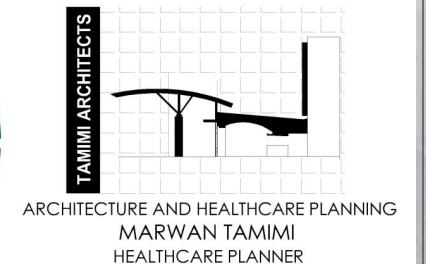
WORK PROCESS IN THE PROJECT (PERMITTING & DESIGN PHASE)

The Work on Design Phase Already Take off, in Spite of all obstacles Since the project located in (C) Zone Classification which take an extra time and effort



	Description	Who Will done this Assignment	Assignment Cost in (USD)
01	Preparing the file to be Handed over to Authorities	Eng. Zahi Gedoon	60,000
02	Preparing Needed Studies and Report requested by Authorities	Validated Engineers	30,000
03	Survey Works	Validated Surveyors	10,000
04	Application Fees	Cancer Patients Charitable Society	Approximately 5,000
05	Newspaper Announcement	Cancer Patients Charitable Society	2,000
06	Legal and Administration Works	Cancer Patients Charitable Society in Cooperation with Lawyers	No Exact Data Available
	Total		107,000

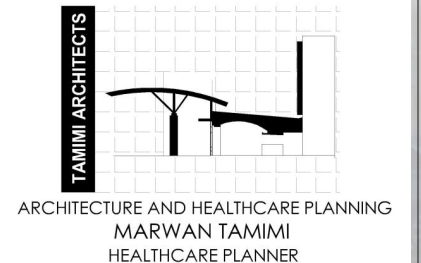
Approximate Design and Permitting Phase Costs



	Description	Who Will done this Assignment	Assignment Cost in (USD)
01	Design Phase	Local Engineers	60,000
02	Document	Local Engineers	20,000
	Total		80,000

Approximate Design and Permitting Phase Costs

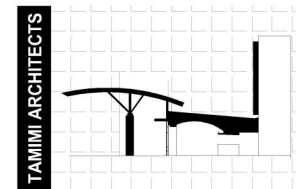
Design and Documents Preparation







Exterior Conceptual Design



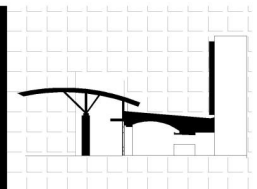
ARCHITECTURE AND HEALTHCARE PLANNING
MARWAN TAMIMI
HEALTHCARE PLANNER



Exterior Conceptual Design



TAMIMI ARCHITECTS



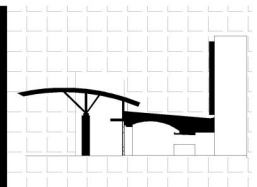
ARCHITECTURE AND HEALTHCARE PLANNING
MARWAN TAMIMI
HEALTHCARE PLANNER



Exterior Conceptual Design



TAMIMI ARCHITECTS



ARCHITECTURE AND HEALTHCARE PLANNING
MARWAN TAMIMI
HEALTHCARE PLANNER